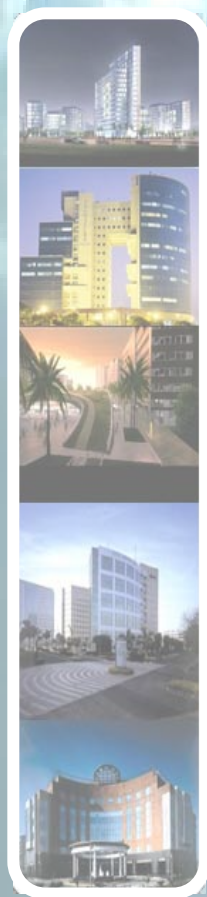
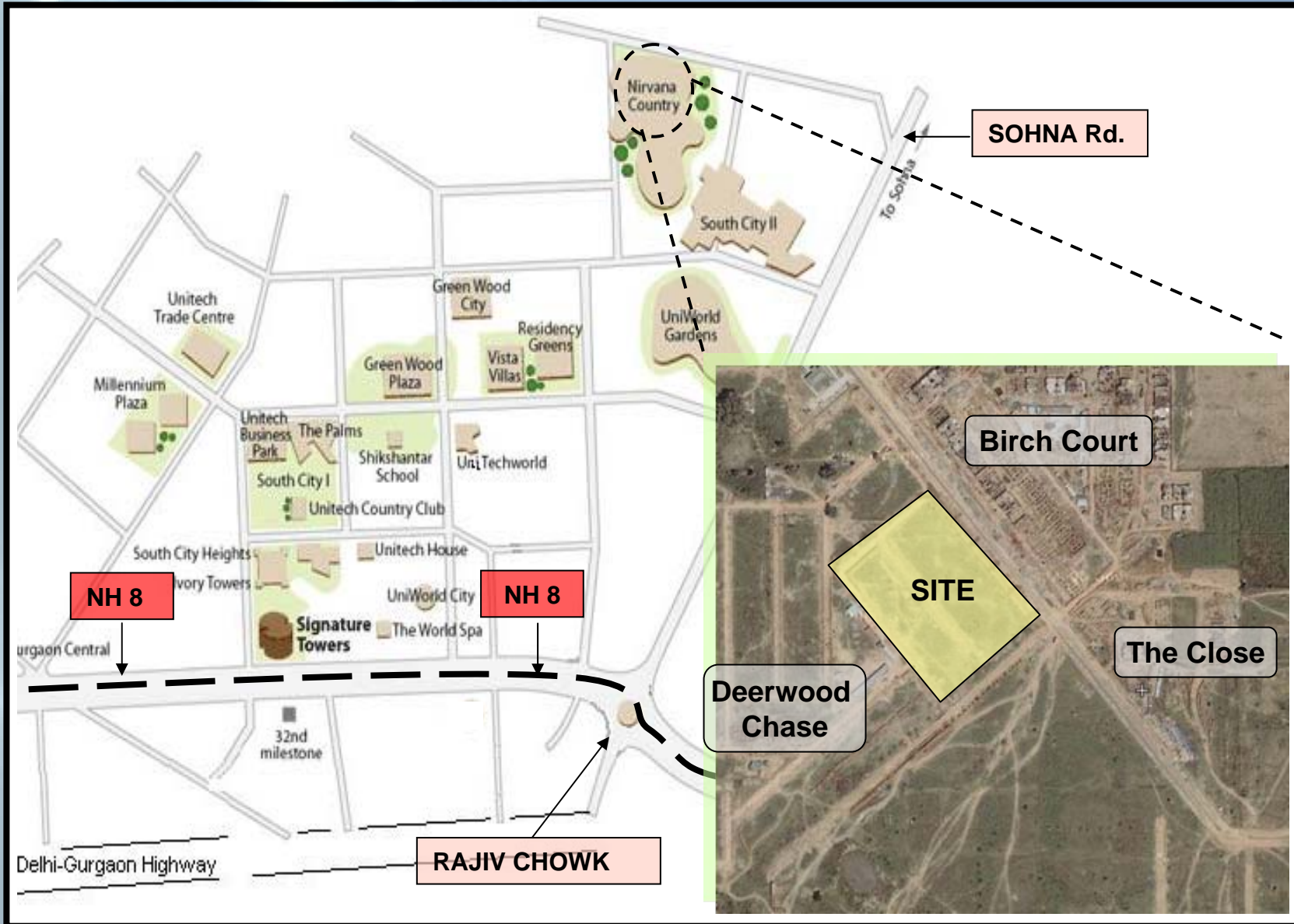




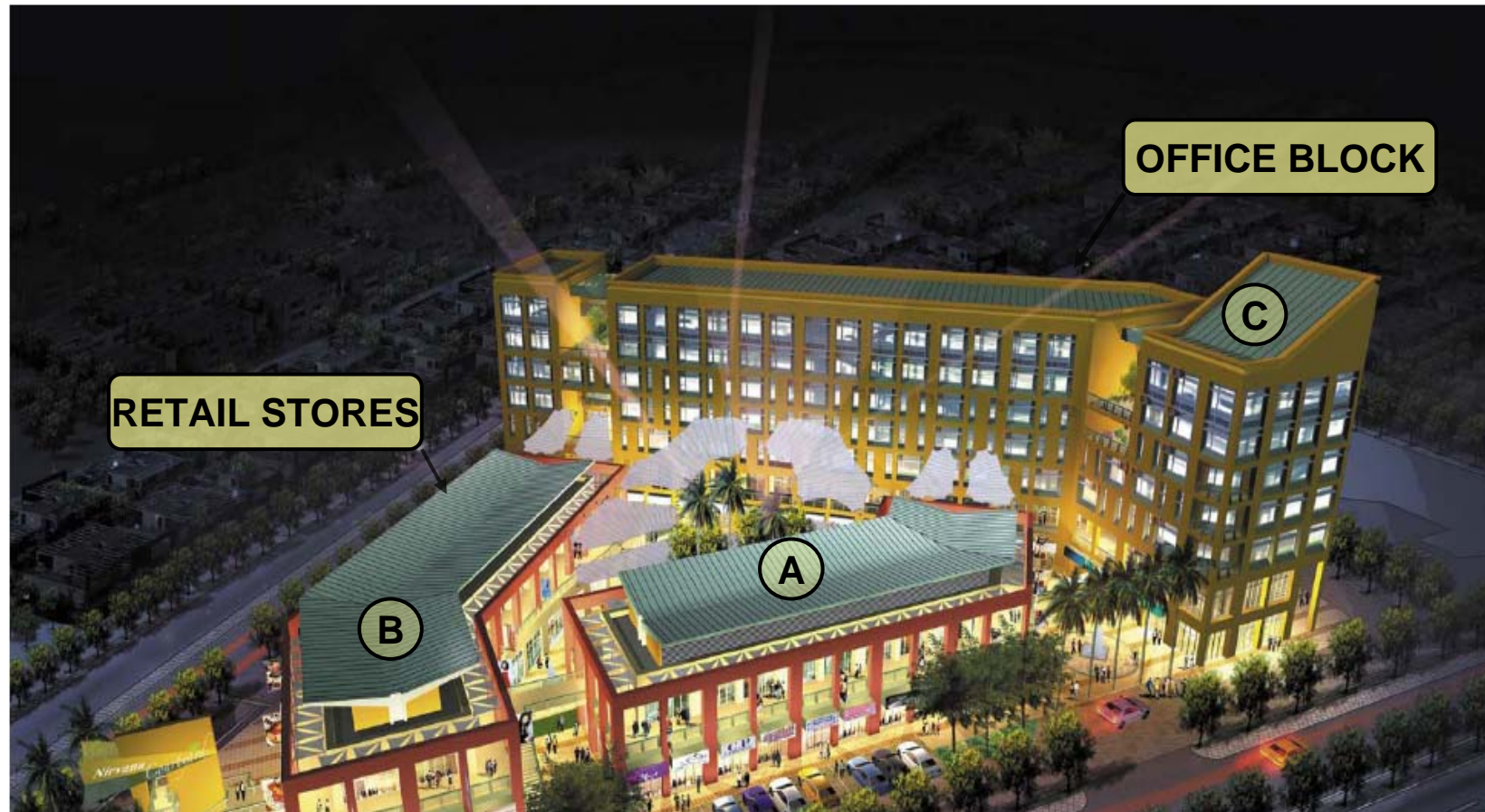
# NIRVANA COURTYARD

# LOCATION MAP



## PERSPECTIVE VIEW

unitech®



- All units designed to achieve maximum frontage exposure.
- Located in midst of the prime residential colonies offering a huge pool of target customers.

# PROJECT OVERVIEW

unitech®

- **Project Name and Address** : Nirvana Courtyard, Nirvana Country, Gurgaon
- **Project Type** : Commercial Complex
- **Total Land Area** : 2.8 Acres (approx.)
- **Total Developed Area** : 5,80,000 sq ft (approx.) [3 blocks]
- **Tower 'C'** : Ground + 8, Office units, ready for hand-over by Q2, 2009
- **Tower 'A' & 'B'** : Ground + 1, Retail Units, ready for hand-over by Q2, 2009
- **Amenities Offered** : 2 level Basement car parks / split a/c in all units / 100% Power Back-up

**THANK YOU!!**

